



# Department of Defense Services



Supporting America's Troops and Their Families for Over 30 Years

Leader in managing prime A/E IDIQ contracts

Design-Build teaming partner in developing win-win strategies

Mentor and partner with small and disadvantaged business

NAICS Codes: 541330, 541310, 541370, 541320, 541380, 541320

# Firm Profile

*"RBF does good work  
and is easy to work with"*

Project Manager,  
NAVFAC Southwest

RBF Consulting (RBF), a Company of Michael Baker Corporation, is a multi-discipline engineering, planning, surveying and construction management firm with 3,250 employees in nearly 110 offices. In the past 20 years, our professional staff has successfully managed 11 regional A/E Indefinite Delivery Indefinite Quantity Contracts (IDIQ) for the Department of Defense and executed over 300 delivery orders under these contracts. RBF has also performed civil engineering, planning, surveying, traffic planning/ engineering and other support services as a subconsultant on IDIQ contracts for environmental, planning, landscape architecture, structural engineering, and various architectural related contracts. As an integral member of design-build teams, RBF has provided civil engineering, surveying and construction staking services for over 75 projects under Multiple Award Construction Contracts (MACC) and Multiple Award Task Order Contracts (MATOC).

Services provided for military facilities have ranged from planning and engineering studies to final contract documents and construction management for a variety of new, repair and renovated facilities, including site development and minor and major infrastructure projects throughout the western United States. Experience includes working in difficult mountainous and desert terrain, sensitive habitat areas, and private military communities.

RBF has a long standing reputation for highly successful performance on projects that require consensus with the client, customer, user, stakeholders, and design and construction teams. We promote the exchange of information and technology in order to provide clients with cutting edge ideas, product choices and cost information to enable customers to make informed decisions. We work closely with design-build teams to think out of the box and develop creative, sustainable and cost effective win-win strategies that increase contractor success and result in projects that meet owner, user, operation and maintenance needs.

# What we do

## Planning

- DD1391 Planning Documentation
- NEPA Documents
- Master Plans
- Watershed Management
- Transportation
- Base Reuse

## Infrastructure

- Utility Master Plans and Design
- Roads and Bridges
- Flood Control
- Water / Wastewater

## Site Development

- Grading and Drainage Design
- Stormwater Management
- Site Utilities
- Parking and Circulation
- Landscape Architecture

## Airfields

- Pavement / Drainage Evaluation and Design
- Lighting
- Fire Protection
- Aviation Fuel

## Training Ranges

- JIEDDO
- MOUT
- Special Operations
- Small Arms and Rifle
- Close Quarters Combat

## Energy

- Solar and Wind Farms
- Biomass
- Geothermal
- Small Hydropower
- Rooftop Laser Scanning
- EPC Support

## Survey and Mapping / LiDAR

## 3D CAD Modeling

## Geographic Information Systems

## Construction Management and Inspection

*“RBF always prepares an excellent set of documents. I like to work with these guys!”*

Project Manager, Camp Pendleton Public Works

## **“Grow the Force” North Mainside Infrastructure MCAGCC Twenty-nine Palms, CA**

**Mission:** *Develop the backbone infrastructure to support approximately 21 new facilities as part of the U.S. Marine Corps “Grow the Force” initiative, which will require the Base to accommodate 1,700 new active-duty Marines.*



### **Project Highlights**

- Prime A-E consultant
- Combined final plans, specifications and estimates, and RFPs into a single hybrid bid package to accelerate construction and stay within available design funds
- Backbone infrastructure to support approximately 200-acres of dense development on raw land
- Roads, drainage and all wet and dry utilities
- Fast-tracked to meet future construction schedules on numerous MILCON projects planned for the area - 100% plans in six months, while also evaluating several engineering alternatives

---

### **Rating = Exceptional**

*“RBF has done an outstanding job on this task order. RBF was flexible with its schedule and design services. Changes in design were made by RBF with short notice as per the customer request. Communication was excellent and cost estimating services were of great quality.” - Project Manager, NAVFAC Southwest Central IPT*

## **“Grow the Force” Interim Facilities Infrastructure MCB Camp Pendleton and MCAGCC Twentynine Palms, CA**

**Mission:** *Provide temporary facilities required to bed-down new service members in the interim while permanent facilities are planned, programmed, and constructed to meet the “Grow the Force” initiative.*



### ***Project Highlights***

- Civil engineering, site planning and surveying services under design-build contract
- Infrastructure for 12 acres of raw land at 18 sites at Twenty-nine Palms
- Infrastructure for 153 acres of raw land at 26 sites at Camp Pendleton
- Accelerated design and construction schedule in order to house incoming troops and accommodate early occupancy of VMU-3
- Worked through a number of user-defined and environmentally mandated changes while developing 100% design in 2 months

---

### **Rating = Excellent**

*“RBF has worked through very difficult circumstances with this project. Through numerous site changes requested by the customers, RBF has continued to put serving the customer as the top priority and has produced quality design drawings again and again” - Project Manager, NAVFAC Southwest Central IPT*

## Various Airfield Repairs MCAS Yuma, AZ

*Mission: Provide safe taxiways and runways for the AV-8B Harrier*



### **Project Highlights**

- Prime A-E contract
- Removal and replacement of 65,000 square yards of airfield pavement and relocation of 44 sunshades
- Detailed planning and assessment of repairs to meet available funding limits
- Self-leveling, Vicon-based silicon joint sealants to sustain performance under high temperatures
- New grounding system
- Inspections completed while maintaining operations
- Multiple field investigation teams mobilized to accelerate design schedule

---

### **Rating = Exceptional**

*"RBF Consulting met with the Air Station representatives to review all site specific requirements for the various projects. They coordinated/scheduled field investigations to minimize impacts to the airfield operations. The customer was completely satisfied with the quality of the final design packages."*

- Project Manager, NAVFAC Southwest Central IPT

## **P-740F Replace Fuel Storage and Distribution System Navy Auxiliary Landing Field - San Clemente Island, CA**

***Mission:** Mitigate potential environmental impacts and secure offshore fuel operations by relocating underground jet fuel tanks currently located near eroding 50-foot sea cliffs.*



### ***Project Highlights***

- Prime A-E consultant
- Three 100,000 gallon JP-5 fuel tanks, one 25,000 gallon de-fuel tank with filter system, pump station, pipeline and booster pumps
- Fuels facility for administration, fuels testing laboratory and fuels equipment maintenance
- Foundations with containment berms, overflow protection, leak detection system, truck fill stand, fuel distribution piping, fuel line extensions, emergency generator, issue and transfer pumping equipment, and demolition of existing tanks
- Sensitive environmental and archaeological areas

## **P-803 Replace Fuel Distribution System Travis AFB, CA**

**Mission:** *Replace an aging jet fuel distribution system and connect two fuel farms and a fuel depot via 17,000 lineal feet of pipes to meet the U.S. Air Force's future operational needs.*



### **Project Highlights**

- Prime survey consultant
- Topographic survey, utility locating and mapping in support of the U.S. Army Corps of Engineers in-house design
- Operations maintained during survey and site investigations
- Established pipe alignments through a complicated series of corridors between restricted-access aircraft runways and taxiways, as well as environmentally and archaeologically sensitive areas

---

### **Rating = Exceptional**

*"RBF has performed exceptional work. The Task Order was completed successfully according to the project schedule. RBF coordinated work with Base Personnel and other contractors to resolve constraints and issues at the Airfield. Submittals were turned in on time, and all comments were answered satisfactorily. Geo-tech Report, Surveying drawings, and Engineering Investigation Report met Army Corps requirements and also were provided with good quality. RBF personnel were very professional and efficient ... Outstanding job!"*

*-Supervising Mechanical Engineer, NAVFAC Southwest*

## Combined Arms Military Operations in Urban Terrain (CAMOUT) Phases I – III MCAGCC Twentynine Palms, CA

**Mission:** *Develop a realistic urban environment designed for immersive combat training and assimilation into the local culture and physical environment.*



Courtesy of the USMC



### **Project Highlights**

- Civil engineering and surveying services under design-build contract
- One of the largest faux urban training facilities of its kind in the world
- Capacity to train 7,000 troops simultaneously
- 300 acres of training grounds featuring more than 1,500 structures
- Various Districts replicate a middle eastern setting
- Extensive collaboration with facility users, Navy project staff, prime contractor, and other consultants

---

### **Rating = Outstanding**

*"RBF has provided a great design that meets the customer's unique requirements at the CAMOUT site."*

- Project Manager, NAVFAC Southwest Central IPT

**P-781 SOF Close Quarters Combat Facility**  
**Mountain Warfare Training Facility, Navy La Posta Miser Station, Pine Valley, CA**

*Mission: Improve the readiness of Navy Seals by providing a single training location to practice simulated and realistic breaching and assault techniques.*

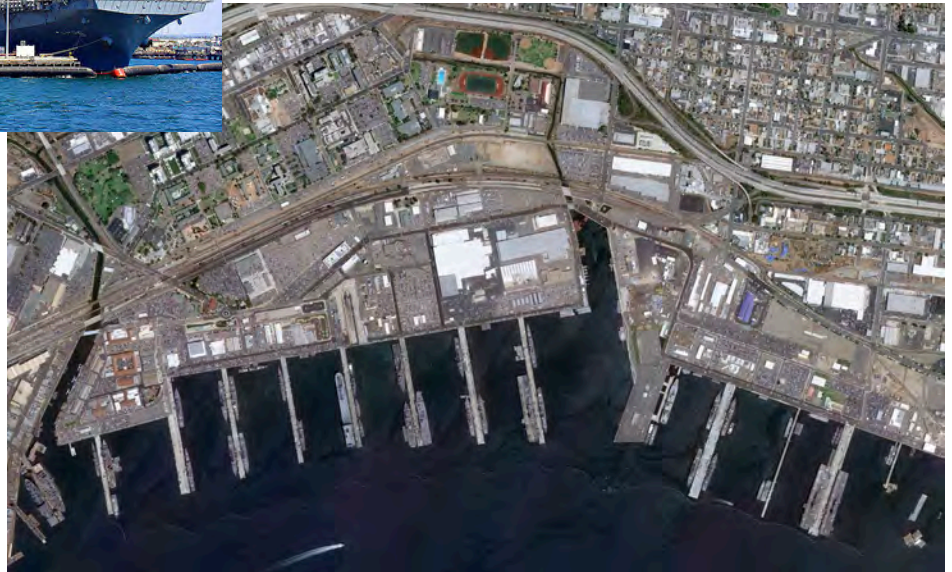


***Project Highlights***

- Civil engineering and surveying under A-E contract
- RFP preparation for 32,000 square feet of training facilities
- Improved site access and extended site utilities to new development area
- Siting analysis and utility assessment to reflect locations of future range facilities
- Two- story “kill house”, two-story method of entry house, and a small residence compound
- Fabrication facility and a logistics and planning facility to support range operations

## **P-405 Homeport Ashore BEQ Utility Study Naval Base San Diego**

***Mission:** Support the development of a comprehensive RFP that clearly outlines existing conditions, and infrastructure and environmental requirements.*



### ***Project Highlights***

- Prime A-E consultant
- 137,000 square foot BEQ on 5.2-acre site and 800-space parking structure
- Site analysis and concept site plans
- Wet and dry utility analysis
- Hazardous materials assessment
- Preliminary cost estimates
- Evaluation of potential renewable energy sources

## Permanent Party Dormitory Luke AFB, AZ

**Mission:** Provide home-like residential quality housing for officers in training and enhance the aesthetics and functionality of the entire Dormitory Campus District.



Architecture by KMA Architecture and Planning

Contractor: Straub

### Project Highlights

- Civil engineering, landscape architecture and surveying services under design-build contract
- Demolition and new construction of a 108-room dormitory to house officers in training
- Design of bio-retention storm water basins to meet water quality goals for LEED® Certification
- Vehicular setbacks designed in accordance with AT/FP guidelines
- Certified LEED® Silver

---

### Rating = Outstanding

*"The Straub/KMA Architects Design Build team has performed superbly on this project... The Contractor's team exhibited 'Pride in Ownership' in designing a dormitory with truly home-like residential quality."* - Project Engineer, USACE Los Angeles District

## **Fitness Center - Building 1705 Nellis AFB, NV**

***Mission:** Design a multi-use, state-of-the-art fitness center to support the Air Force's Fit to Fight Program*



### ***Project Highlights***

- Civil engineering and surveying under A-E contract
- Plans, specifications and estimates for new 109,000 square foot fitness center on 11 acres
- Partnership between the City of North Las Vegas and the U.S. Air Force
- Certified LEED Silver

## Real Estate Summary Map Updates NAVFAC Southwest – Eight Locations

**Mission:** *Ensure that all Real Estate Actions (In-Grants, Out-Grants, Acquisitions and Disposals) were properly captured and documented in the existing RESM.*



### **Project Highlights**

- Prime A-E consultant
- Research and scanning of Navy muniment and cadastral records for 8 facilities including up to several hundred real estate transaction instrument files per location
- Created a simpler and faster CADD conversion process and navigation platform
- Hyperlinking of Base RESM status spreadsheet

---

### **Rating = Very Good**

*"RBF provided valuable input with regards to converting the drawings."* - Land Surveyor, NAVFAC Southwest

## USACE Border Fence Yuma, AZ

**Mission:** As part of the Department of Homeland Security's overall Border Infrastructure Improvement Program, the wall's primary function is to prevent vehicles from crossing along this section of the border.



### ***Project Highlights***

- Civil engineering, surveying and construction staking services under a design-build contract
- 1.6 miles of border fence and access roads along the US - Mexico border
- Survey crews traveled over extremely remote Arizona desert paths to access the site to locate boundary monumentation between the two countries



## **Santa Ana River Reach 9 - Phase 2B - Access Roadway, Bridge and Bike Trail Detour Orange and Riverside Counties, CA | USACE Los Angeles District**

***Mission:** Overall project improves the embankment protection along SR-91 for the Santa Ana River since upgrades were completed to the Prado Dam immediately upstream of the project site. The project also realigns the river to accommodate the future SR-91 Corridor Improvement Project.*



### ***Project Elements/Highlights***

- Civil / structural engineering, surveying, landscape architecture and related services under ID/IQ contract
- Two fast-track task orders funded by The American Recovery and Reinvestment Act
- Lead role in creating over 70 plan sheets, obtaining approved encroachment permits in Caltrans Districts 8 and 12, and meeting the challenge of delivering the fast-tracked project on time
- Dual-compliance of Corps plans and specifications with Caltrans standard plans and specifications

---

**Rating = Very Good**

## Prado Dam Outlet Works, Corona, CA USACE Los Angeles District

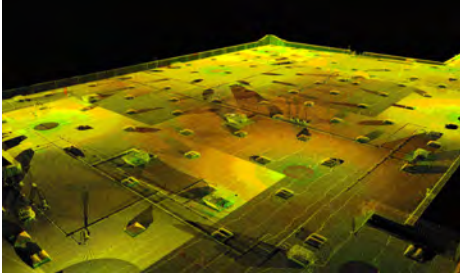
**Mission:** Provides flood control and water conservation storage for growing communities in Orange, Riverside and San Bernardino counties.



### ***Project Highlights***

- Prime consultant
- Raised spillway crest by 20 feet and the top of the dam by 28.4 feet to a new elevation of 594.4 feet
- Special seismic analysis and design for the Outlet Works Structure to withstand ground accelerations resulting from the Maximum Credible Earthquake.
- New outlet works capable of releasing water at a rate of 30,000 cubic feet per second
- Laser scanning of the constructed stilling basin using point cloud data to quality control check the as-built concrete grades

# Renewable Energy



## Rooftop Laser Scanning for Photovoltaic Projects

RBF provides clients with laser scanning, topographic maps, and 3D data for sun analysis on large building roof tops for design and construction of solar panels.

RBF uses a three dimensional (3D) laser scanner referenced to geodetic coordinates with a GPS unit to locate the parapets, air conditioning units, sky lights, vents, gas, water and electrical lines, satellite dishes, access hatches, signs. The use of the laser scanner allowed the location of adjoining buildings and trees.

A 3D data model is used to analyze the roof top for the effect of sun shading from objects on the roof top and the surrounding area. Client's are then able to design the location of the solar panel array on the roof top for maximum power output.

## Geothermal

- Treatment for Geothermal Brine and Cooling Tower Make-up Water
- Cooling Tower Optimization
- Piping and Site Design
- Surveying and Permitting

## Utility Scale Solar and Wind

- Land Acquisition Feasibility Studies
- Land Surveying
- Civil Engineering
- Construction / As-Built Surveys
- Environmental Analysis / Entitlement
- GIS Infrastructure Mapping
- Construction Management
- Public Outreach



Project Name	Facility Location	Design-Build Partner	PS&E Under IDIQ's	RFP Preparation	Planning and Engineering Studies
<b>SITE DEVELOPMENT</b>					
P-750 Helicopter Maintenance Hangar	NAS North Island		✓		
New Naval Hospital - Civil Portion	MCB Camp Pendleton			✓	
"Grow the Force" Temporary Facilities	MCAGCC Twentynine Palms	✓			
"Grow the Force" Temporary Facilities	MCB Camp Pendleton	✓			
P-790v Regional Confinement Facility – BRIG - Civil	MCAS Miramar			✓	
Golf Course Club House Replacement	MCAS Miramar	✓			
P-051, 052, 134 & 161 BEQ Package 8	MCB Camp Pendleton	✓			
P-167 BEQ Package 10	MCLB Barstow	✓			
P-742 BEQ	NAS North Island	✓			
P-740 BEQ and Sewer Treatment Plant	San Clemente Island			✓	
P-991 BEQ at Chappo Area 22	MCB Camp Pendleton	✓			
P-063 Marine Corps University and P-069 BEQ	MCB Camp Pendleton	✓			
P-093 BEQ at San Onofre Area 52	MCB Camp Pendleton	✓			
P-254 BEQ at 32nd Street	Naval Station San Diego	✓			
P-234 Transient Student Quarters	NAF El Centro	✓			
P-685 and P-623 BEQ's	MCAGCC Twentynine Palms	✓			
Permanent Party Dormitory	Luke AFB, AZ	✓			
Fitness Center - Building 1705	Nellis AFB, NV		✓		
Repair 58 RQS - Various Facilities	Nellis AFB, NV	✓			
Repair Electronic Warfare Building 415	Nellis AFB, NV	✓			
Repair Office of Special Investigations Building 828	Nellis AFB, NV	✓			
P-503 Child Development Centers	NAS North Island/NAB Coronado			✓	
P-497 Support Integration Facility	MCB Camp Pendleton	✓			
and P-557 Enlisted Dining Facility	MCAGCC Twentynine Palms			✓	
P-724 Regimental Artillery Maintenance Complex	MCB Camp Pendleton	✓			
P-011 Aviation Armament Shop	MCB Camp Pendleton	✓			
P-016 Support Integration Lab	NCB Port Hueneme	✓			
Naval Coastal Warfare Group One Facilities	NOLF Imperial Beach	✓			
Ordnance Ground Support Equipment Facility	NAS Fallon		✓		
Demolition Design (Buildings 6, 10, 128, 314, 403, 409, 801, 639 & Renovate 806)	NAS Fallon		✓		
P-342 Magazine Repair	NAS Fallon	✓			
P-864 Magazine Repair	NWS Seal Beach		✓		

Project Name	Facility Location	Design-Build Partner	PS&E Under IDIQ's	RFP Preparation	Planning and Engineering Studies
<b>INFRASTRUCTURE / UTILITIES</b>					
P-405 Homeport Ashore BEQ Utility Study	Naval Base San Diego				✓
BEQ's 1109 and 1113 Siting Studies	MCB Camp Pendleton				✓
North Mainside Infrastructure	MCAGCC Twentynine Palms		✓	✓	
16-inch Potable Waterline Replacement	NAS North Island		✓		
Gas Line Replacements (10 projects / 23 Miles)	MCB Camp Pendleton			✓	
Trans-bay Water Delivery Pipeline Condition Evaluation	NAS North Island				✓
P-159 Operation Access Points at Red Beach	MCB Camp Pendleton		✓		
Santa Margarita Inflatable Cofferdam	MCB Camp Pendleton			✓	
USACE Border Fence (1.6 miles)	Yuma, AZ	✓			
USACE Tres Rios Environ. Restoration - Phase 3	Phoenix, AZ		✓		
USACE Prado Dam Outlet Works	Corona, CA		✓		
Water System Study	San Nicolas Island NOF				✓
Backflow/Cross-Connection Study	NWS China Lake				✓
Drainage Inventory	MCB Camp Pendleton				✓
Naval Auxiliary Landing Field Activity Overview Plan Infrastructure Study	San Clemente Island, CA				✓
Water Line Rehabilitation Under the Santa Margarita River	MCB Camp Pendleton	✓			
Sewer Force Main and Pump Station	MCAGCC Twentynine Palms	✓			
13 New & Upgraded Sewer Pump Stations	MCB Camp Pendleton	✓			
Replace Lift Station Sewer Pumps and Controls at Buildings 559 and 1250	NASNI Coronado	✓			
Modifications to Sewage Treatment Plants 2 and 9, and Collection System Improvements MCB	MCB Camp Pendleton	✓			
Potable Well Replacement	MCB Camp Pendleton	✓			
Base-wide Sewer Repairs	MCRD San Diego		✓		
Base-wide Sewer Repairs	NWS Seal Beach		✓		
Water Distribution Piping System (Areas 1, 2 and 3)	MCRD San Diego			✓	
Waterline Distribution System Replacement	NAWS Point Mugu			✓	
MARSOC Area 41 Utility Study	MCB Camp Pendleton				✓
Site Utilities Assessments	Various Sites at NAVFAC SW				✓
USACE Santa Ana River Reach 9 - Phase 2B - Access Roadway, Bridge and Bike Detour	Orange and Riverside Counties		✓		

Project Name	Facility Location	Design-Build Partner	PS&E Under IDIQ's	RFP Preparation	Planning and Engineering Studies
<b>TRAINING RANGES</b>					
P-781 SOF Close Quarters Combat Facility	MWTF Navy La Posta Miser Station			✓	
P-013J JIEDDO Battle Course	NAWS China Lake	✓			
P-1129 JIEDDO Battle Course	MCB Camp Pendleton	✓			
P-183 JIEDDO Battle Course	MCAGCC Twentynine Palms	✓			
P-971 Combined Arms Military Operations on Urban Terrain [CAMOUT] Phases I, II, & III	MCAGCC Twentynine Palms	✓			
Range 409 Repairs	MCB Camp Pendleton		✓		
P-164 Combat Training Tank Complex	MCAS Miramar			✓	
P-614 SMTB Battle Course	MCB Camp Pendleton			✓	
Close Combat Battle Course	MCB Camp Pendleton			✓	
Range Safety Improvements at Various Locations	MCB Camp Pendleton			✓	
Gunnery Range 314 Access Road and Bridge	MCB Camp Pendleton		✓		
Feasibility Study - 25 Training Range Access Roads	MCB Camp Pendleton				✓
<b>AIRFIELDS AND PAVEMENTS</b>					
P-740 Replace Fuel Storage and Distribution System	NALF San Clemente Island		✓		
DESC 1054-Aircraft Hot Fuel Pit	NBVC Point Mugu			✓	
P-803 Replace Fuel Distribution System	Travis AFB				✓
Airfield Repairs (Runway 17; Taxiway E, D and F)	MCAS Yuma		✓		
Airfield Pavement Repairs (Phase II)	MCAS Miramar	✓			
R22-01 Repair / Seal Runway	NOLF Imperial Beach	✓			
Repair Parking Aprons and Taxiway T2N-1 Overlay	NAS North Island	✓			
Repair Runway CREF# 995C288	MCAS Camp Pendleton	✓			
Repair Runway 14L & 24R Infield Drainage	MCAS Miramar		✓		
Kitts Pedestrian Lane/Bike Path (1.6 miles)	NWS Seal Beach		✓		
NAVSPECWAR Parking Lots (5 locations)	NAB Coronado		✓		
Base-wide Road Repairs	MCRD San Diego		✓		
Repair Parking Apron 7, Phase I	NAWS Point Mugu			✓	
DD1391 for Runway and Approach Lighting Repair	NAWS Point Mugu				✓
DD1391 for Airfield Lighting Repair	San Nicolas Island NOF				✓

Project Name	Facility Location	Design-Build Partner	PS&E Under IDIQ's	RFP Preparation	Planning and Engineering Studies
<b>PLANNING DOCUMENTATION AND OTHER PROJECTS</b>					
Parking Study at Building 601	NAB Coronado				✓
Pier Security Study	Naval Station San Diego				✓
Base Master Plan Traffic & Parking Analysis	MCAGCC Twentynine Palms				✓
Traffic Control Study - Entry Control Gate Layout	MCB Camp Pendleton				✓
Main Entrance Truck Inspection Lane Investigation	Naval Medical Ctr San Diego				✓
Entry Gates 4 & 5 Improvements	MCRD San Diego		✓		
Main Gate Relocation and Fence Ammunition Road	NWS Seal Beach - Fallbrook		✓		
Counter-Terrorism Upgrades to Main Gate CT 050-05 and West Minister Westminster Gate CT 013-05	NWS Seal Beach	✓			
Base-wide Engineering Evaluation - 201 Buildings	MCAS Miramar				✓
Real Estate Summary Map Updates	NAVFAC Southwest - 8 Bases				✓
SPAWAR Fire Main Lateral Study at Building 600	San Diego				✓
DD1391 for Fire Station	MCMWTC Bridgeport				✓
DD1391 for Warehouse Storage Facility, Main Fire Station Repair and New Gymnasium	NBC Port Hueneme				✓
DD1391 for Replacement of Control Tower	NAS Lemoore				✓
P-110 Reclaimed Water and Sanitary Sewer Systems Survey Layout and Construction Staking	MCB Camp Pendleton	✓			
Record of Surveys	Alameda and Treasure Islands				✓
Boundary and Record of Survey	MCLB Barstow				✓
Ortho Rectified Aerial Photography For Neotectonic Studies of The Northern Coso Range	NAWS China Lake				✓
Chocolate Mountains Aerial Gunnery Range Cadastral Survey	Imperial County, CA				✓
Public-Private Venture – Phases I and II Housing	San Diego Complex			✓	✓
Flag Quarters Condition Assessment	NAVFAC World-wide				✓

# Providing Value to Our Clients

## **P-324 High Explosive Magazines, Naval Air Station, Fallon NV**

*"The working relationship between the government (specifically ROICC Fallon and NASF Public Works) was an example of how all government-contractor relationships should work. This was text-book partnering. The contractor was most responsive to the government's requirements and was proactive in meeting job requirement. This contract was completed on-time and on-budget, a rarity for MILCON construction." - ROICC Officer, NAS Fallon*

## **"Grow the Forces" Interim Facilities, Twentynine Palms**

*"RBF has done a great job preparing site plans and adapting to the sometimes fluid nature of the Marines Interim Facilities Requirements." - Project Manager, NAVFAC Southwest Central IPT*

## **P-164 Training Tank Complex RFP, MCAS Miramar**

*"RBF team members were readily accessible and very cooperative to satisfy the customer's requirements and maintain the project completion schedule." - Design Manager, NAVFAC Southwest Central IPT*

## **Sewage Ponds and Main Pumping Station Study, NAS Lemoore**

*"...Meetings were conducted on time and followed by thorough meeting minutes. RBF Consulting was also available to quickly respond to comments and questions regarding the study. After the completion of the study, RBF continued to provide valuable information, which helped in making future decisions regarding the pump station. Overall, RBF Consulting met the goal and intent of the study and provided a valuable product to NAS Lemoore." - Civil / Structural Branch Head, NAVFAC Southwest*

## **Evaluation of the Transbay Water Delivery System Pipeline, NAS North Island, Coronado**

*"RBF delivered this project in an effective manner, taking into consideration all risks associated with this study. Site constraints (i.e. location of the water delivery pipeline) were properly managed and the A-E firm was able to provide an adequate assessment in order to disseminate the information the Government was looking for, in preparation for a potential future project that may involve US Navy, the city of San Diego, and the city of Coronado. RBF exceeded the project requirements and the client expectations." - Project Manager, NAVFAC Southwest Coastal IPT*

## **Gas Line Repairs (23 Miles), MCB Camp Pendleton**

*"Half way through the project, which already had a tight and methodical schedule, RBF was notified the project could be part of the ARRA and geared up to complete the work 6 weeks ahead of the original schedule."*

## **MCRD Base-wide Road Repairs**

*"The firm did an Outstanding Performance on this project. Despite several major customer changes and resolving unforeseen site problems, the firm completed the work on time and within the original budget." - Navy Project Leader*

## **NAS Fallon Ordnance Ground Support Equipment Facility**

*"This project was on a very tight schedule, the design had to be completed in a very short time frame to take advantage of expiring funds. RBF was very cooperative and completed the design on schedule." - Navy Project Leader*

## **Site Utilities Assessment, Various Locations, NAVFAC Southwest Division**

*"The time to complete the site utilities task orders was in a very short period (60 days). The lead design firm effectively mobilized their team to conduct the field investigation and was proactive in coordinating with individual Base POC. The firm maintained excellent QC procedures which ensured the final report delivered on time and did not require rework. The firm successfully completed assessments and delivered the report on time allowed NAVFACSW meeting the internal deadlines for submitting DD1391." - Project Manager, NAVFAC Southwest*

## **Repair/Seal Runway – NOLF R22-01, Naval Outlying Field Imperial Beach**

*"RBF personnel greatly exceeded the contract requirements by incorporating airfield striping and included additional paving repair to a fire department adjacent to the airfield. With the additional work the Design/Build team was able to minimize disruption with air operations, and complete the project on time, and within budget. The A/E has gone above and beyond the Navy's expectations and is highly recommended for future Design/Build work." - Project Manager, NAVFAC Southwest Coastal IPT*



RBF Consulting

Business Development contact info:

Diane Elias

[delias@rbf.com](mailto:delias@rbf.com)

858.614.5025