

ENTERPRISE & SYSTEM IMPLEMENTATION

NEEDS ASSESSMENT & PLANNING

DATABASE DESIGN

# GEOGRAPHIC INFORMATION SYSTEMS

DATA CONVERSION

LIVEMAP GIS WEB SITE DEVELOPMENT

APPLICATION DEVELOPMENT

MOBILE GIS

SPATIAL ANALYSIS

“The geographic environment is a mould into which the human race has been poured, and the history of the race has been shaped by that mould.”

A.E. Parkins, *Journal of Geography* 33, 1934

ID	Name	Description
100	1-101-1A	Notes: According to the ACIR maintenance plan, basin numbers 10, 11, and 12 are intended for channel overflow. Minimum 200 (2000).
101	1-101-1B	These different drainage basins have basins. There are mostly basins and are intended for the drainage basins and are intended for the drainage basins.
102	1-101-1C	Notes: According to the ACIR maintenance plan, basin numbers 10, 11, and 12 are intended for channel overflow. Minimum 200 (2000).
103	1-101-1D	Notes: According to the ACIR maintenance plan, basin numbers 10, 11, and 12 are intended for channel overflow. Minimum 200 (2000).
104	1-101-1E	Notes: According to the ACIR maintenance plan, basin numbers 10, 11, and 12 are intended for channel overflow. Minimum 200 (2000).
105	1-101-1F	Notes: According to the ACIR maintenance plan, basin numbers 10, 11, and 12 are intended for channel overflow. Minimum 200 (2000).
106	1-101-1G	Notes: According to the ACIR maintenance plan, basin numbers 10, 11, and 12 are intended for channel overflow. Minimum 200 (2000).
107	1-101-1H	Notes: According to the ACIR maintenance plan, basin numbers 10, 11, and 12 are intended for channel overflow. Minimum 200 (2000).
108	1-101-1I	Notes: According to the ACIR maintenance plan, basin numbers 10, 11, and 12 are intended for channel overflow. Minimum 200 (2000).
109	1-102-1A	Notes: According to the ACIR maintenance plan, basin numbers 10, 11, and 12 are intended for channel overflow. Minimum 200 (2000).
110	1-105-1D	Notes: According to the ACIR maintenance plan, basin numbers 10, 11, and 12 are intended for channel overflow. Minimum 200 (2000).
111	1-112-6A	Notes: According to the ACIR maintenance plan, basin numbers 10, 11, and 12 are intended for channel overflow. Minimum 200 (2000).
112	1-112-6B	Notes: According to the ACIR maintenance plan, basin numbers 10, 11, and 12 are intended for channel overflow. Minimum 200 (2000).
113	1-112-6C	Notes: According to the ACIR maintenance plan, basin numbers 10, 11, and 12 are intended for channel overflow. Minimum 200 (2000).
114	1-113-6A	Notes: According to the ACIR maintenance plan, basin numbers 10, 11, and 12 are intended for channel overflow. Minimum 200 (2000).
115	1-114-1A	Notes: According to the ACIR maintenance plan, basin numbers 10, 11, and 12 are intended for channel overflow. Minimum 200 (2000).
116	1-114-1B	Notes: According to the ACIR maintenance plan, basin numbers 10, 11, and 12 are intended for channel overflow. Minimum 200 (2000).
117	1-114-1C	Notes: According to the ACIR maintenance plan, basin numbers 10, 11, and 12 are intended for channel overflow. Minimum 200 (2000).
118	1-115-6A	Notes: According to the ACIR maintenance plan, basin numbers 10, 11, and 12 are intended for channel overflow. Minimum 200 (2000).
119	1-115-6B	Notes: According to the ACIR maintenance plan, basin numbers 10, 11, and 12 are intended for channel overflow. Minimum 200 (2000).
120	1-115-6C	Notes: According to the ACIR maintenance plan, basin numbers 10, 11, and 12 are intended for channel overflow. Minimum 200 (2000).
121	1-115-6D	Notes: According to the ACIR maintenance plan, basin numbers 10, 11, and 12 are intended for channel overflow. Minimum 200 (2000).
122	1-115-6E	Notes: According to the ACIR maintenance plan, basin numbers 10, 11, and 12 are intended for channel overflow. Minimum 200 (2000).
123	1-115-6F	Notes: According to the ACIR maintenance plan, basin numbers 10, 11, and 12 are intended for channel overflow. Minimum 200 (2000).
124	1-116-1A	Notes: According to the ACIR maintenance plan, basin numbers 10, 11, and 12 are intended for channel overflow. Minimum 200 (2000).
125	1-117-6A	Notes: According to the ACIR maintenance plan, basin numbers 10, 11, and 12 are intended for channel overflow. Minimum 200 (2000).
126	1-117-6B	Notes: According to the ACIR maintenance plan, basin numbers 10, 11, and 12 are intended for channel overflow. Minimum 200 (2000).
127	1-118-6A	Notes: According to the ACIR maintenance plan, basin numbers 10, 11, and 12 are intended for channel overflow. Minimum 200 (2000).
128	1-118-6B	Notes: According to the ACIR maintenance plan, basin numbers 10, 11, and 12 are intended for channel overflow. Minimum 200 (2000).
129	1-119-6A	Notes: According to the ACIR maintenance plan, basin numbers 10, 11, and 12 are intended for channel overflow. Minimum 200 (2000).



**REPRESENTATIVE PROJECT EXPERIENCE:**

*Enterprise Geodatabase Design & Implementation  
for Cities and Counties throughout the West*

*Interactive Map & Environmental Permit  
Facility Tracking Database*

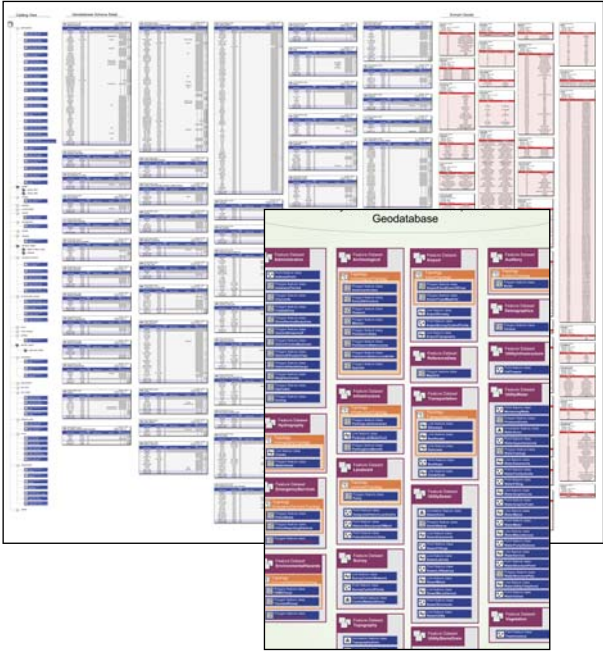
*Housing Needs & Land Use Analysis*

*GIS Needs Assessment & Strategic Plan*

*Bike Path Improvement Study & GIS Mapping*

*Housing Conditions Field GPS Survey & GIS Mapping*

*Parkway Extension & Impact Analysis*



**RELEVANT SERVICES INCLUDE:**

*Needs Analysis  
System Planning & Implementation  
Data Conversion  
Geodatabase Design  
Enterprise GIS Implementation  
Customized Interactive Web Mapping  
Custom Web Applications  
Web Hosting  
Mobile Applications  
GIS Application Customization  
Database Collection Tools  
Database Development  
Environmental  
Wildlife Habitat  
Species Habitat & Conservation Plans  
Permit Compliance & Inspection  
Mapping & Databases  
Geospatial Databases  
Pipeline Assessment Data  
Compilation & Prioritization*

*Water Resources:  
Water Agency GIS  
Implementation Plans  
Pipeline Facility Conversion  
Functional GIS Database to  
Billing & Asset Management  
Comprehensive Master Plans /  
Modeling*

*Land Development:  
Asset Management  
Detailed Land Plans  
Area Calculations  
Builder Responsibilities  
Sales Tracking  
Development Activity  
Due Diligence  
& Impact Analysis*

Transportation / Planning



Land Use Analysis



PLANNING ■ DESIGN ■ CONSTRUCTION



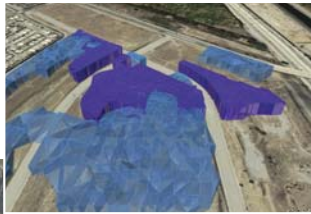
800.479.3808

WWW.RBF.COM

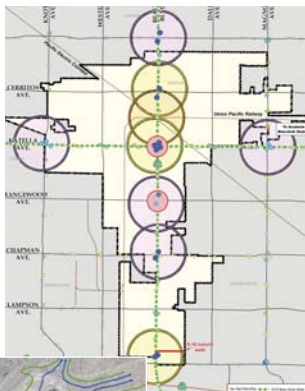
Bike/Pedestrian Route  
and Transit Node Mapping



3D Visual Analysis



Transit Oriented Districts  
Buffer Analysis



Impact Analysis



100%  
From well-managed forests  
Cert no. XXX-XXX-XXX  
www.fsc.org  
© 1996 Forest Stewardship Council